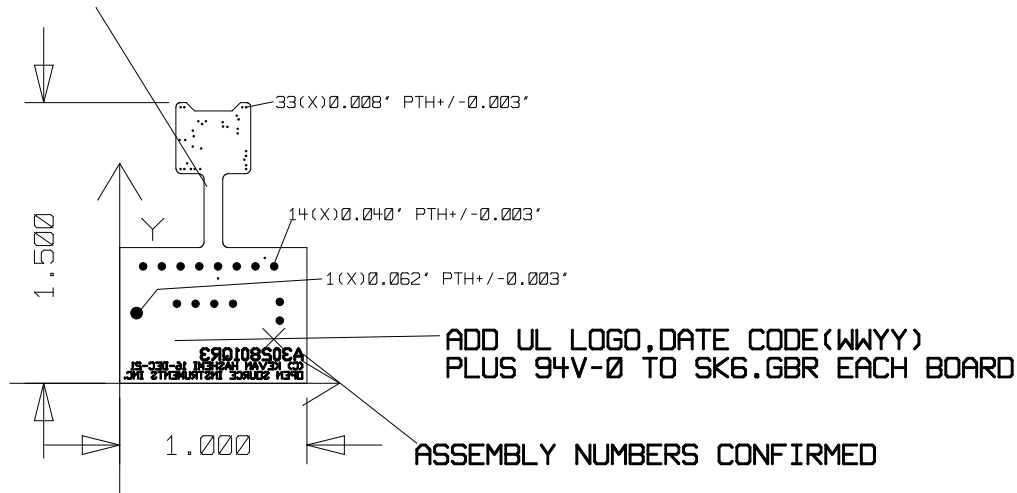


ANTENNAE TRACK LAYER 2  
OK BY DESIGN.



#### NOTES:

1. UNLESS OTHERWISE SPECIFIED FABRICATE PER IPC 6012 CLASS 2
2. MATERIAL: 185HR 6 LAYERS 0.031' +/- 0.004' OVERALL  
FINISHED COPPER WEIGHT TO BE 10Z FOR OUTER LAYERS AND 0.5 OZ INNER LAYERS
3. SOLDER MASK BOTH SIDES LPI GLOSS RED
4. BOTH SIDES SILKSCREEN: COLOR WHITE
5. SURFACE FINISH: ENIG NICKEL: 118u'-236u' GOLD: 2u'-5u'  
RoHS COMPLIANT
6. ELECTRICAL TEST : Required with Cert and Stamp

PART FOR: A302801QR3 REV 2-W